

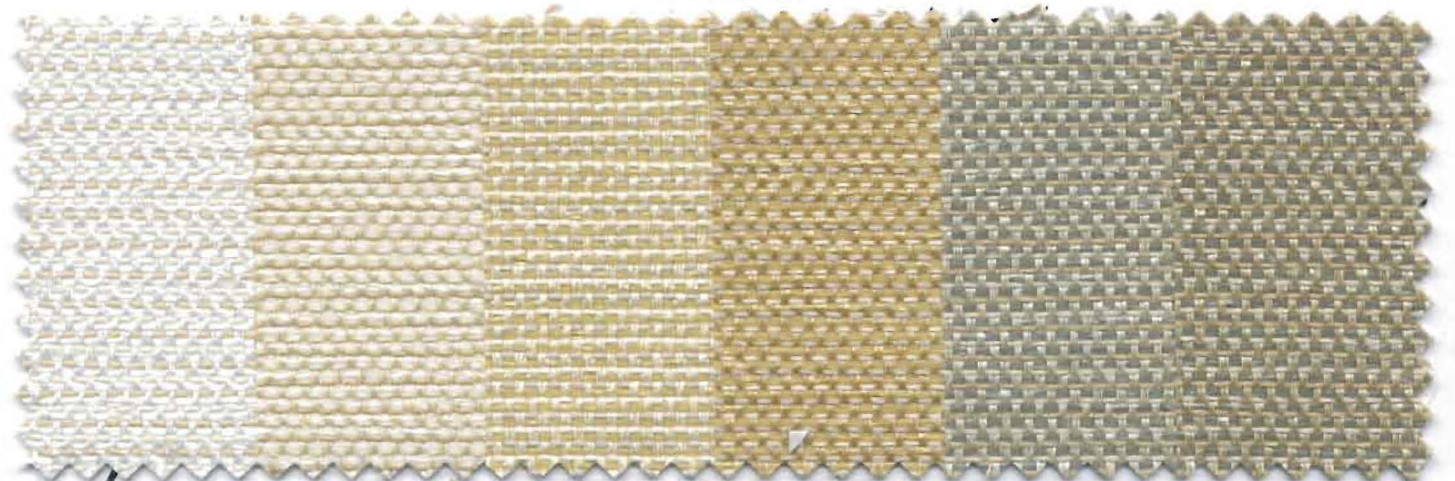
# INSIGHT



High Performance Woven Fabric for Panel and Partition Systems



106-10  
Coffee Bean



106-02  
Tealight

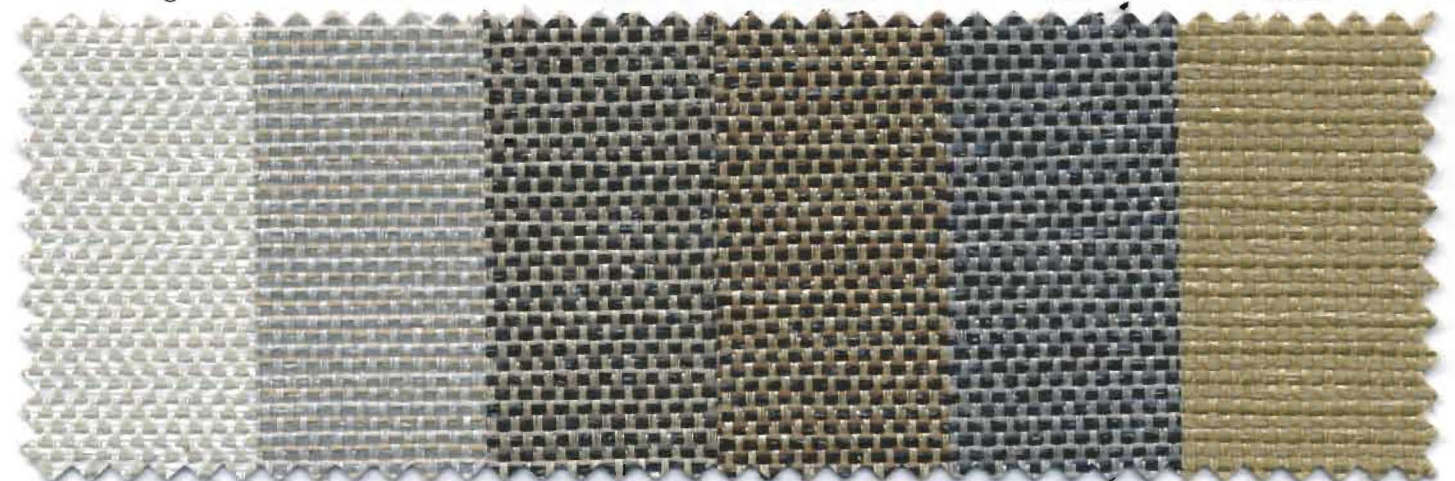
106-03  
Macadamia

106-04  
Fennel

106-05  
Tassel

106-08  
Koi

106-06  
Sierra



106-01  
Glimmer

106-09  
Stone

106-11  
Newsprint

106-13  
Hazelnut

106-12  
Night Sky

106-07  
Leaf

# INSIGHT

High Performance Woven Fabric for Panel and Partition Systems

- **Roll Size:** 50 Yards • **Width:** 54" Plus Selvage • **Weight:** 16 oz. per linear yard.
- **Composition:** Woven of Polyester and Olefin Yarns • **Backing:** Acrylic

## Finish

Crypton "GREEN" Stain & Soil Repellant. Each fiber is encapsulated for durable performance. Crypton is engineered to repel spills and be easy to clean.

## Environmental

- Contains recycled content minimum 30% post-industrial
- Meets section 01350 emissions requirements
- SCS Indoor Advantage Gold-certified
- Recyclable, contact mfr. for details

## Anti-Microbial Properties

Insight will not mildew, rot, or support the growth of bacteria and is non-allergenic. The Crypton "GREEN" finish uses Silver Ion Technology to inhibit the growth of a broad spectrum of medically relevant microorganisms. Silver is one of nature's original antimicrobials. The Crypton finish resists bacteria without the use of conventional leaching antimicrobials.

## Performance

Colorfast to light:	Class 5 (over 200 hours)
Colorfast to Crocking:	Class 5 (dry/wet procedure)
Moisture Regain:	0.05% (Excellent)
Abrasion Resistance:	Exceeds 100,000 Wyzenbeek double rubs (cotton duck)

## Noise Reduction

Available unbacked - 1 roll minimum

## Flammability

Tunnel Test:	Class A: 20-50 (Gypsum)
Corner Burn:	Passes
Vertical Burn:	Passes

## Maintenance

Fabric is easy to clean. Depending upon the extent of soilage, use traditional cleaning methods, i.e., washing, wiping, vacuuming. If promptly treated, most indelible stains can be removed by using selected cleaning agents with no damaging effects.



**HYTEX INDUSTRIES, INC**  
58 YORK AVENUE, RANDOLPH, MA 02368-1828  
(781) 963-4400 • FAX (781) 986-5956  
[WWW.HYTEX.COM](http://WWW.HYTEX.COM)

